



## TRITON ENCLOSED Polycarbonate Canopies

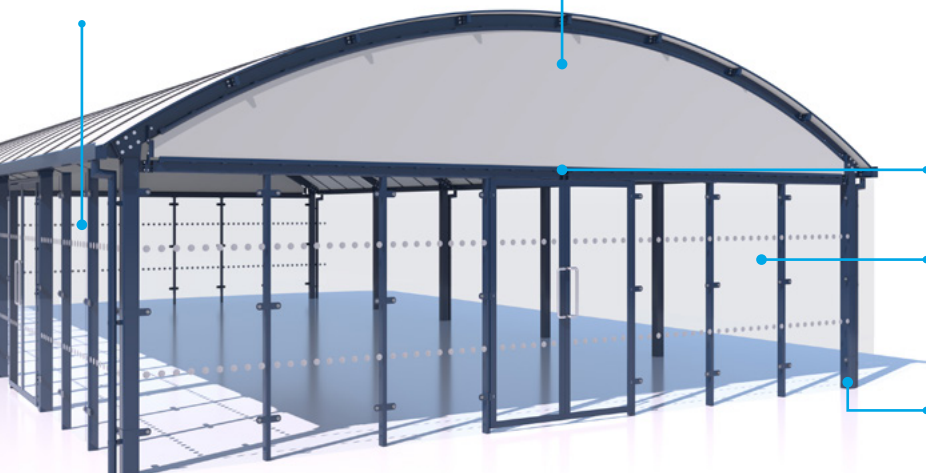
TRITON Enclosed Canopies harness the flexibility of the TRITON polycarbonate canopy systems and combine them with a selection of side cladding, doors, heaters, lighting and surfacing options to create enhanced weather protected spaces.

TRITON canopies are based around a modular design theme, providing a consistent aesthetic and efficient cost structure with the flexibility for specific site requirements and constraints. The standard roof specification is the advanced multiwall polycarbonate providing a bright atmosphere without glare, with our proven aluminium glazing system ensuring a reliable and easy to maintain roof cover for the long term. The 25-year structure and 15-year roof covering warranties provide long term peace of mind, with aftercare packages available for periodic inspection and cleaning.

Streetspace undertakes dynamic thermal analysis modelling during the detailed design stage of each enclosed canopy project, taking into account the specific site conditions and the orientation of the structure. The specification of the roof, size and positioning of ventilation gaps, doors and heaters are adjusted as required to ensure temperatures in summer and winter fall within accepted parameters for the use.

The Streetspace experienced multi-disciplinary team coordinates the design and delivery of TRITON Enclosed Canopies as a single package, including liaison with building control, civil engineering works, surfacing and electrical installation.

No length limit



### Façade Mesh Infill Panels

Enclosed canopies can incorporate perforated fabric infill panels to ventilate the space while keeping out precipitation.

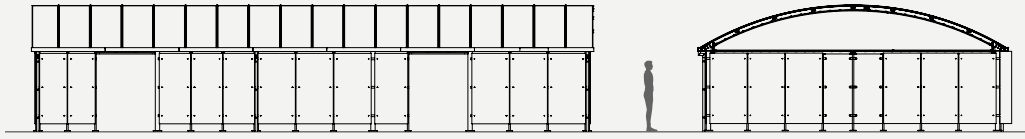
### Clear span widths of up to 15m

### Enclosure Options

Enclosure options include solid polycarbonate, toughened glass and aluminium glazed curtain walling.

### Post Centres

Standard post centres are between 3.5m and 5.5m with variations within the structure possible to avoid doorways, access routes or underground services



## Design Features



### Glazing & Rainwater Systems

Aluminium roof glazing system and galvanised powder coated steel rainwater systems for long term reliability.



### Design Form Flexibility

Available as radius symmetric, asymmetric or mono pitch roof; column positions adjustable to fit adjacent building design.



### Light Transmission

This must be considered for the use type and the roof cladding can be specified to suit the application.



### Roof Cladding Options

Multiwall polycarbonate panels with a selection of tint options to suit the location.



### All Weather Protection

Enclosure options include solid or multiwall polycarbonate, planar glass and aluminium glazed curtain walling.



### Confidence in Accreditation

Streetspace design, manufacturing and construction processes are accredited to ISO9001, ISO14001 and BS EN 1090 CE EXC 2.

## Product Specification

TRITON Enclosed Canopies are available with a number of different forms and support options. With each structure being designed on a site specific basis, challenges such as level changes or adjacent door and window positions can easily be accommodated.

### Canopy Form

TRITON Enclosed Canopies can be constructed in three forms: symmetric, asymmetric or mono pitch. Asymmetric structures are particularly suitable for positioning against existing buildings.

### Canopy Support

As well as the standard freestanding design, TRITON Enclosed Canopies are available in wall-mounted format, subject to appropriate structural requirements.

### Canopy Dimensions

TRITON Enclosed canopies can be constructed in widths of 1m - 15m as clearspan structures. Wider spans can be achieved using intermediate columns, there is no limit on the length. Standard post centres are between 3.5m and 5.5m with variations within the structural design achievable to avoid doorways, access routes or underground services.

## Canopy Options

### Lighting

Various energy efficient lighting solutions are available to provide a bright environment whatever the weather and to enable extended use into the evenings.

### IR Heaters

Radiant electric heaters can be fitted to TRITON Enclosed Canopies to provide warmth to users in colder weather.

### Glazed Aluminium Doorsets

Including doorsets in the perimeter of your enclosed canopy formalises the entrance to the space as well as providing security so that furniture can be stored within as needed.

### Facade Mesh Infill Panels

Enclosed canopies can incorporate perforated fabric infill panels to ventilate the space while keeping out precipitation. They are typically installed in the gable end which also reduces glazing costs.

### Rainwater Systems

TRITON canopies are designed with integral steel guttering and custom manufactured aluminium downpipes. Colour powder coated finishes match the canopy steel frame for long term durability and ease of maintenance.

## Fame Finishes

Highly durable polyester powder coatings are applied as the standard finish on steel frame ORION canopies with colours selected from a basic range or from the RAL colour selector. Steelwork is cold grit-blasted to SA2.5, with a zinc coating and anti-corrosive primer, followed by the high gloss polyester colour powder coat finish. Alternatively, hot-dip galvanised coatings can be specified for the harshest environments where a decorative finish is not required.



Hot-Dip Galvanised

Colour Polyester Powdercoat

